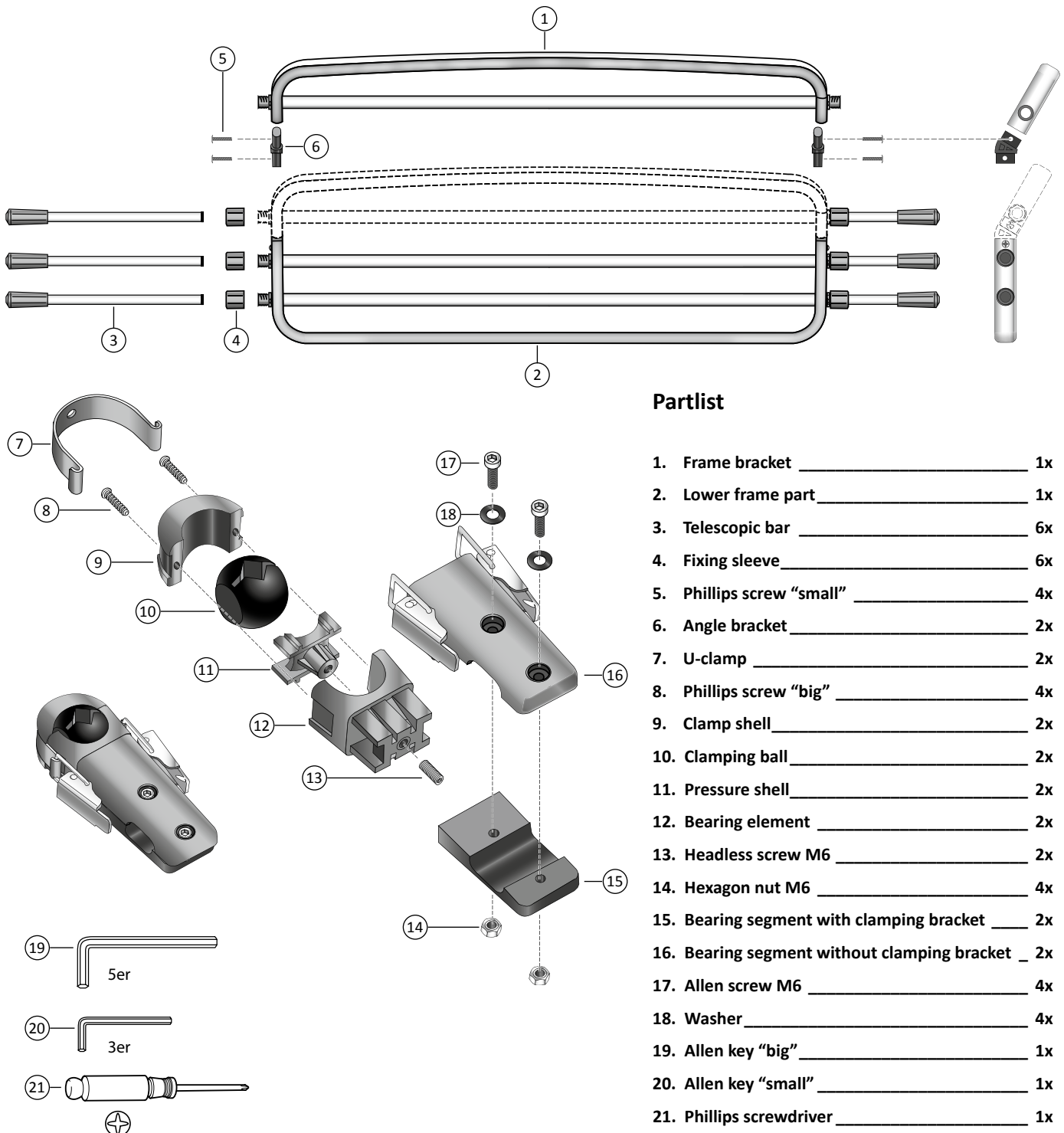


Mounting Instruction

Product name	ROADMASTER DELUXE
Product designation	Universal passenger cell barrier
Parts No.	10001413
Mounting	to the headrest bars
Usability	Reduction in passenger disruption during animal transport
Type and design	anodised aluminium profiles, powder-coated steel, stainless steel
Dimensions	height: 25 cm, width: 95 to 145 cm (telescopic bars)
Weight	2,4 kg

kleinmetall GmbH
Hainstraße 52
63526 Erlensee
Telefon 06183.91120-0
Fax 06183.72152
E-Mail info@kleinmetall.de
www.kleinmetall.de

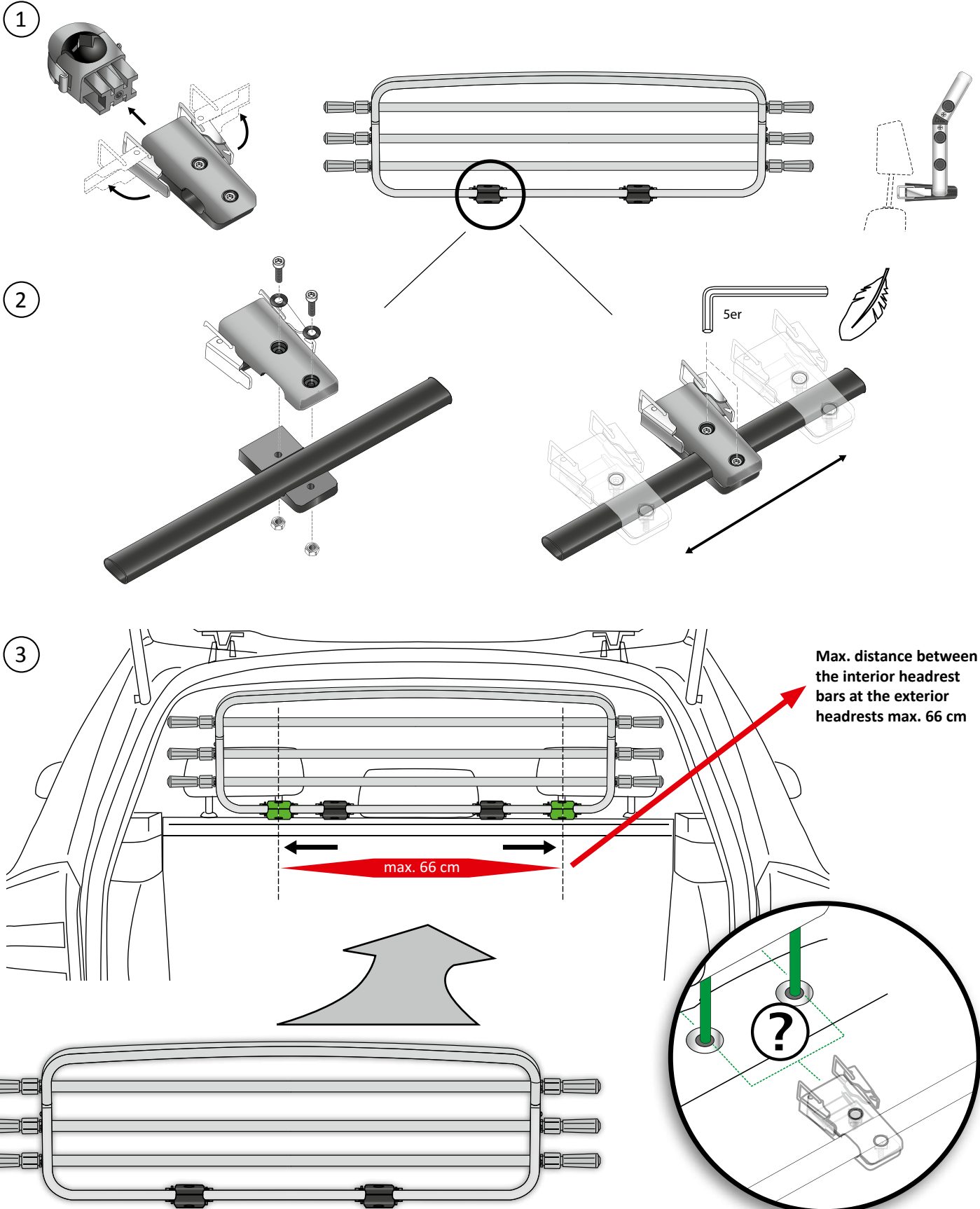
Please read these instructions carefully and store them in a safe place.
Make sure that your barrier is correctly fitted before each use!



Partlist

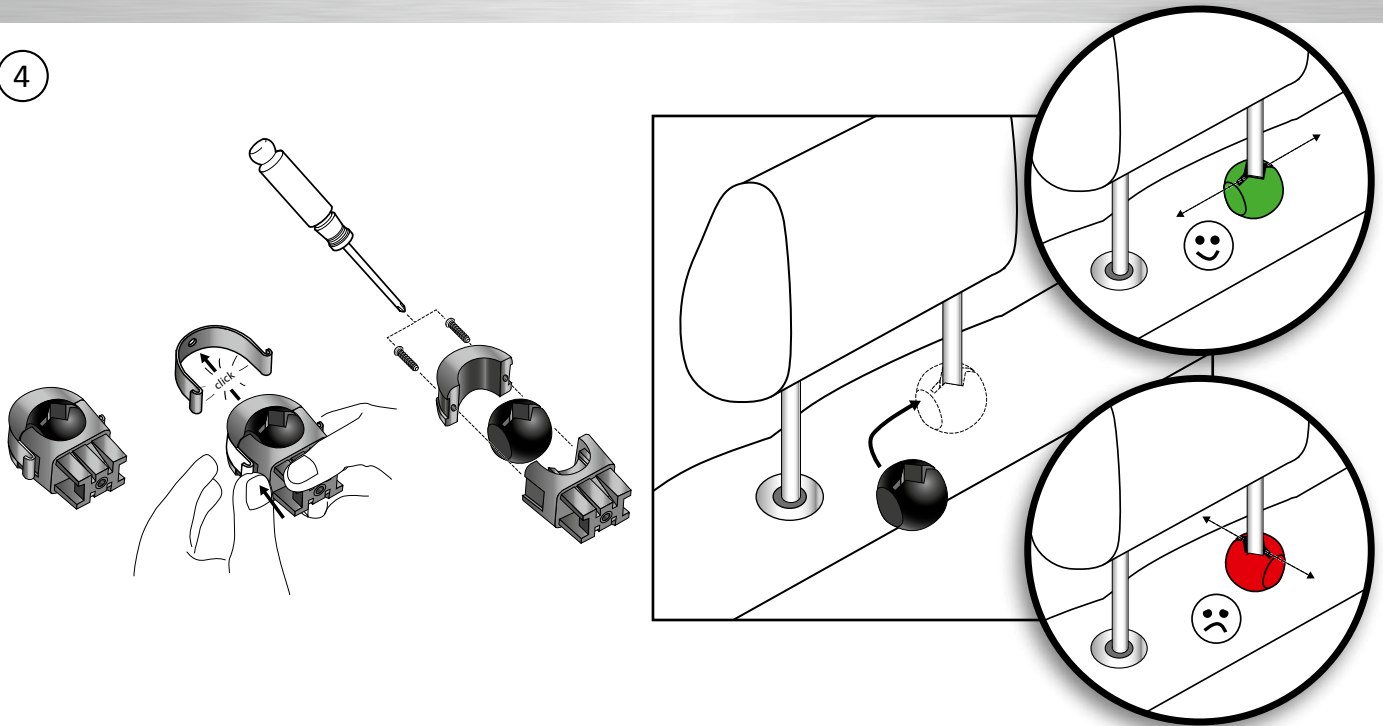
1. Frame bracket	1x
2. Lower frame part	1x
3. Telescopic bar	6x
4. Fixing sleeve	6x
5. Phillips screw "small"	4x
6. Angle bracket	2x
7. U-clamp	2x
8. Phillips screw "big"	4x
9. Clamp shell	2x
10. Clamping ball	2x
11. Pressure shell	2x
12. Bearing element	2x
13. Headless screw M6	2x
14. Hexagon nut M6	4x
15. Bearing segment with clamping bracket	2x
16. Bearing segment without clamping bracket	2x
17. Allen screw M6	4x
18. Washer	4x
19. Allen key "big"	1x
20. Allen key "small"	1x
21. Phillips screwdriver	1x

Mounting Instruction

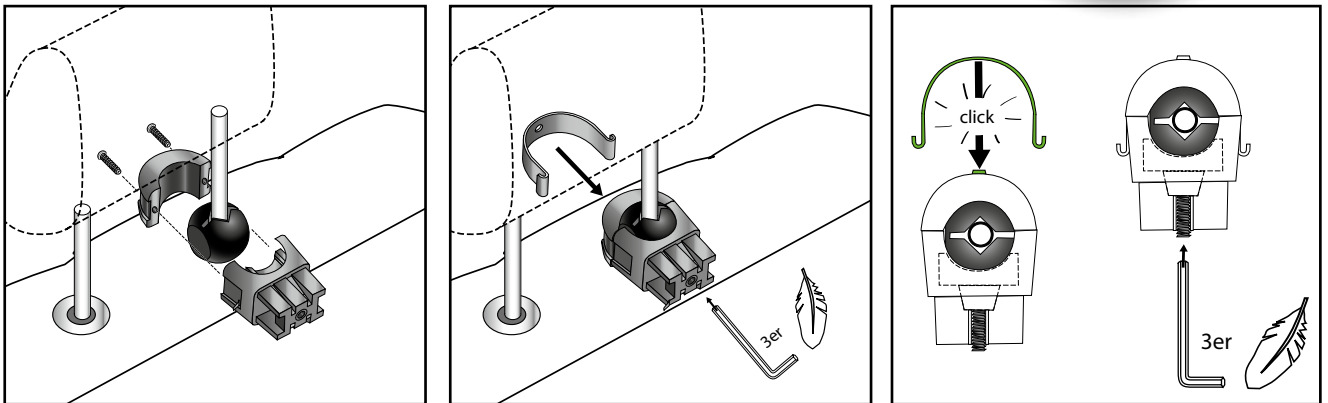


Mounting Instruction

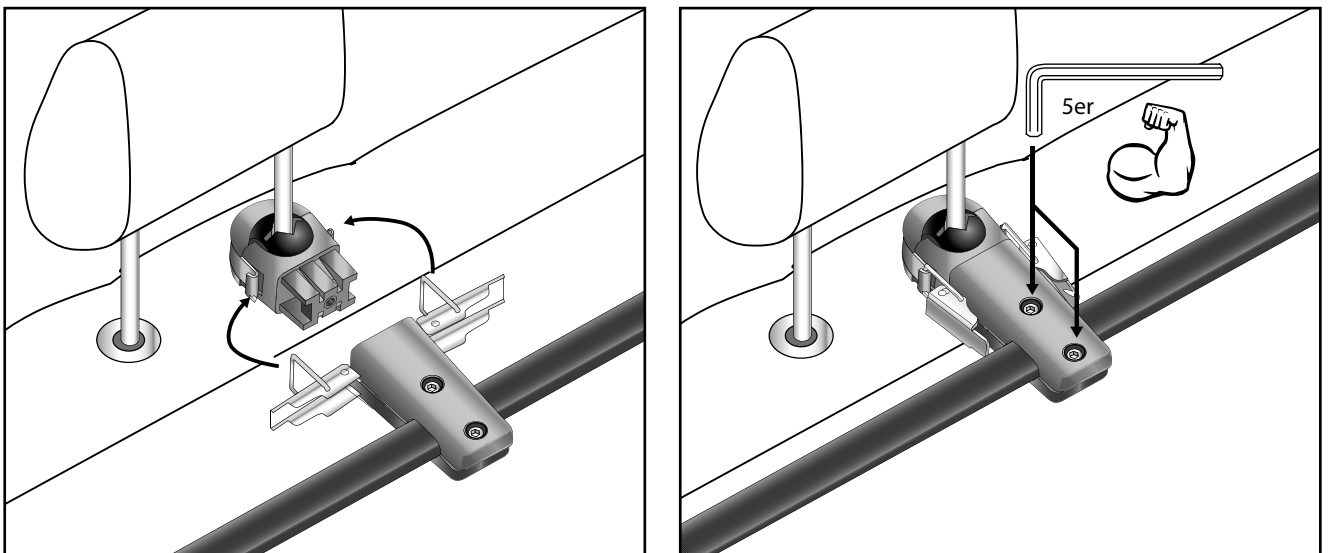
4



5

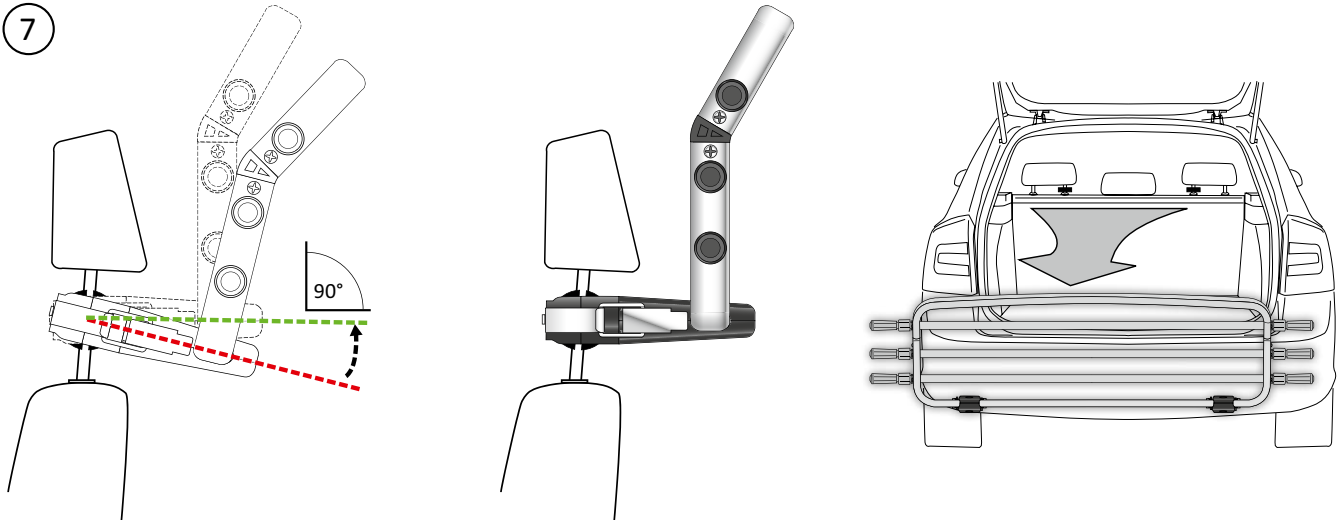


6

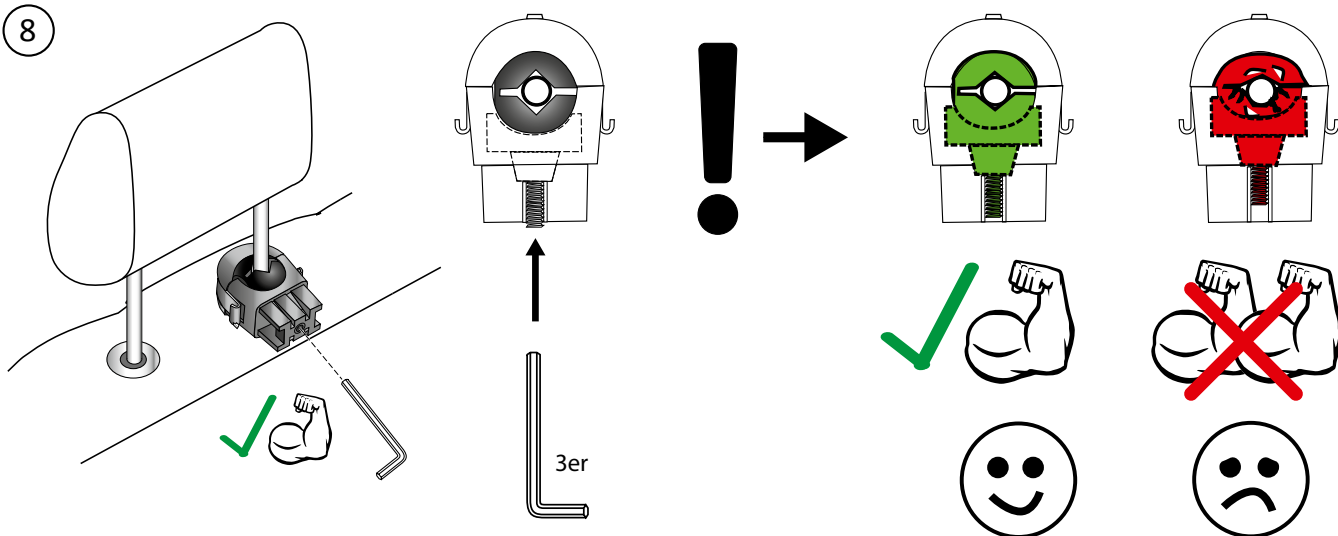


Mounting Instruction

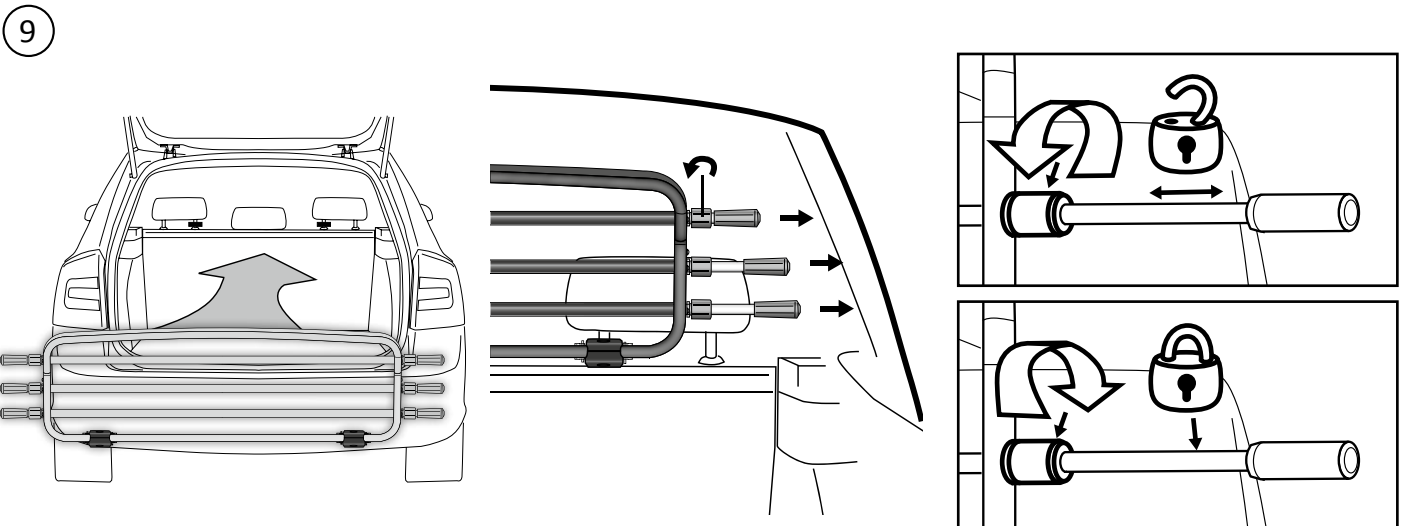
7



8

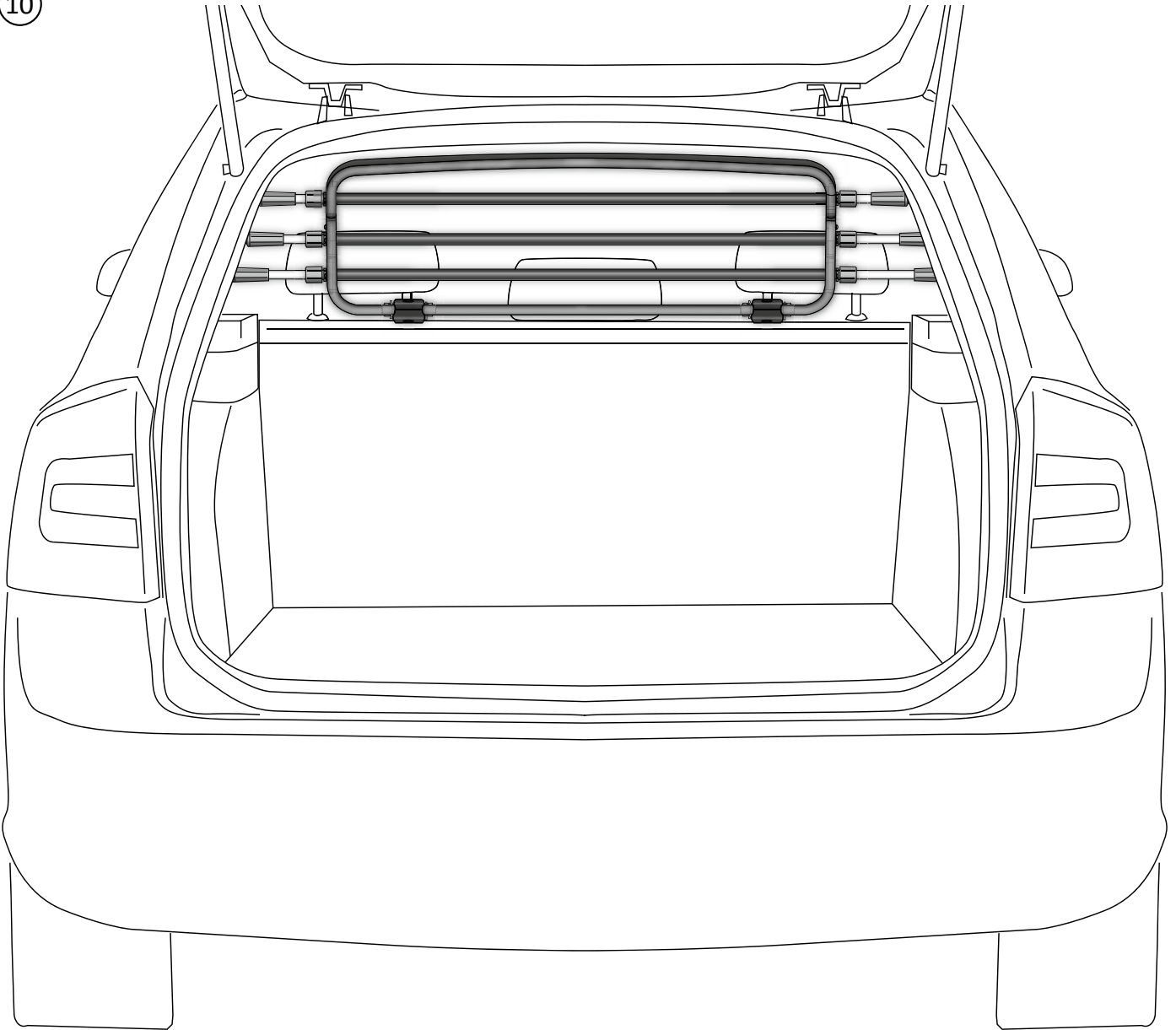


9



Mounting Instruction

10



General Notes:

Make sure that the barrier is centrally positioned in the vehicle and that all the mounting parts are fixed tight. Take care that the headrests are fixed properly. Check that the backrest has engaged before driving. In some vehicles it is no longer possible to install the roll cover together with the dog barrier. If the grid is not needed, it can be easily removed from the headrest bearing elements by loosening the lateral clamping bracket (quick release). **Max. distance between the interior headrest bars at the exterior headrests max. 66 cm.**

Safety instructions:

The barrier is not intended to protect vehicle occupants from displaced luggage (UN-R 126). Before travelling, check all the mounting parts for tight fit and damage. The transport of people behind the barrier is prohibited. Check all screw fittings from time to time and retighten if necessary. Adjust all the seats where the barrier is mounted to the same inclination angle so that the grid does not twist. Never leave pets alone and unattended in the car.

Cleaning instructions:

Use neutral soap lye to clean the barrier and all the mounting parts especially from dog saliva and dog hair from time to time.

Maintenance instructions:

Carry out visual inspections on the barrier in regular intervals and replace damaged parts immediately if necessary.